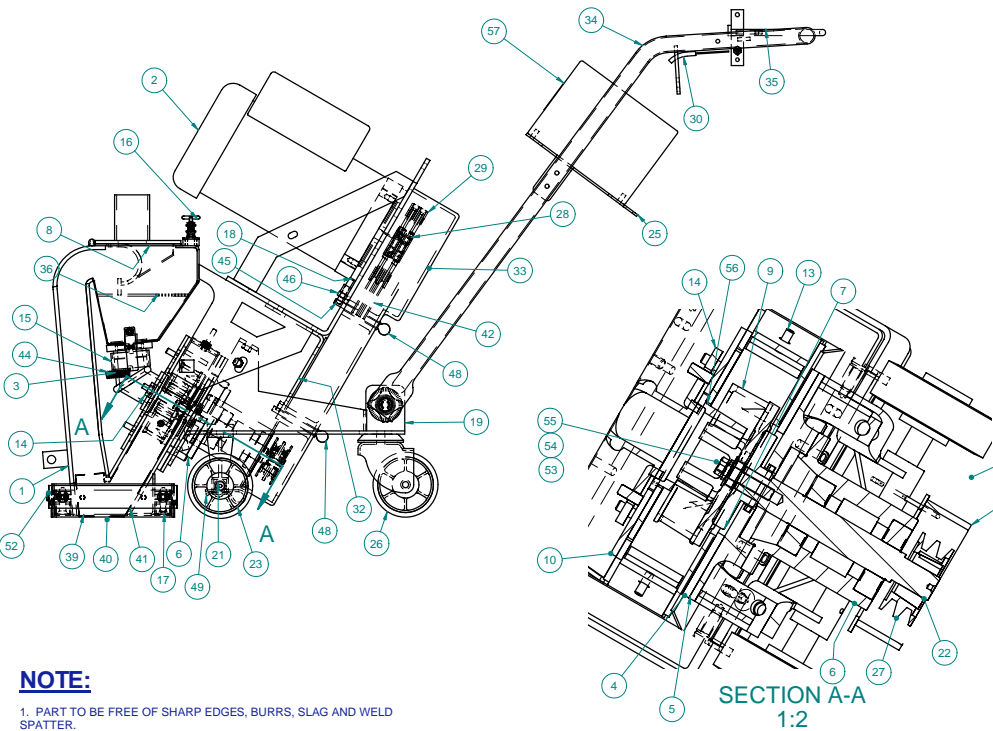
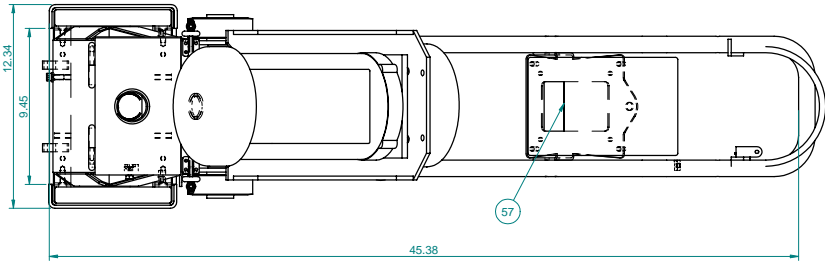
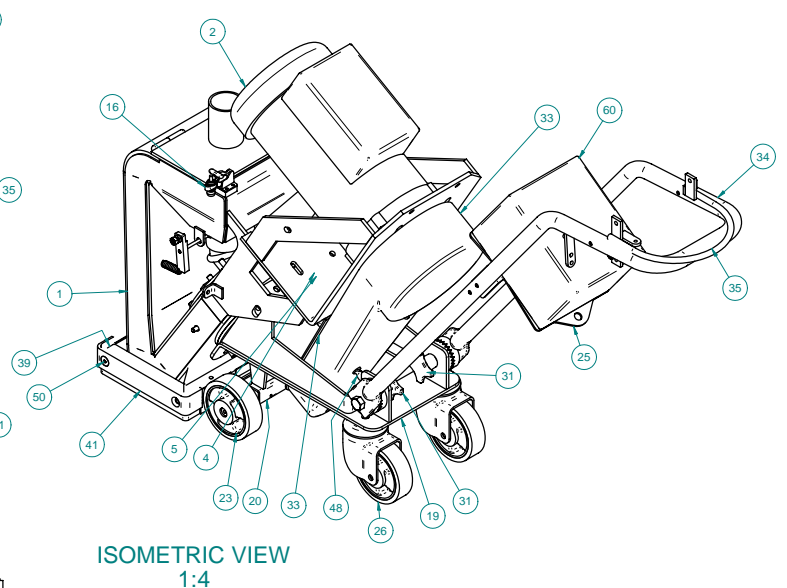
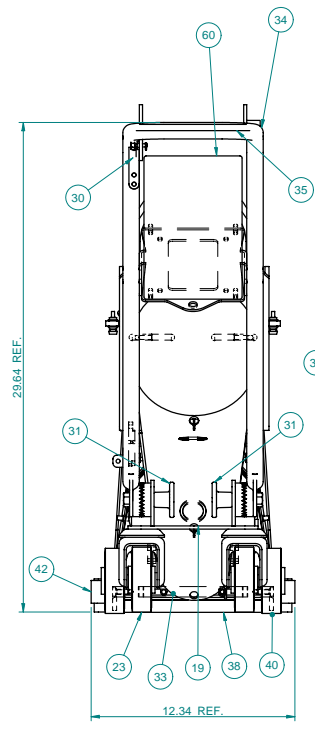


ITEM	QUANTITY	CATALOG NUMBER	DRAWING NUMBER	DESCRIPTION	WIDTH	LENGTH	ITEM	QUANTITY	CATALOG NUMBER	DRAWING NUMBER	DESCRIPTION	WIDTH	LENGTH	ITEM	QUANTITY	CATALOG NUMBER	DRAWING NUMBER	DESCRIPTION	WIDTH	LENGTH
49	1	6960020	--	PIN/HAIR STYLE(CLEVIS) FOR 3/8"-3/4" DIA. SHAFT X .093" WIRE DIA	--	2.50"	25	1	P002647	421-0011	MOUNTING PLATE/ELECTRICAL BOX	8.32"	11.26"	1*	1	6962810	420-0011	BLAST HOUSING SLL	--	--
50	4	P001682	--	SCREWSOC. FLAT 5/16-18 S.S.	--	1.75"	26	2	6962940	--	CASTER/SWIVEL 4" X 1-1/4"	--	--	2	1	6908160	--	MOTOR/ELEC. 3HP 230V 60HZ 1PH	--	--
51	1	P000001	420-0015	VALVE/ABRASIVE CONTROL	--	--	27	1	690820	--	SHEAVE/TAPERLOCK 2/3V265-1108 DODGE #112128	--	--	3	1	9675700	--	FEED SPOUT	--	--
52	4	5001140	--	WASHER/LOCK 5/16"	--	--	28	1	690838	--	BUSHING/TAPER LOCK	--	--	4	1	P001125	420-0012	SEAL/BEARING UNIT	--	--
53	1	4900890	82A0608	INSERT/WHEEL ADAPTER	--	--	29	1	6908190	--	SHEAVE/TAPERLOCK 2/3V53-1610 DODGE #112194	--	--	5	1	6962770	420-0013	MOUNTING-PLATE/BEARING	--	--
54	1	6815560	--	WASHER/LOCK M10.0	--	--	30	1	6933320	--	ABRASIVE VALVE CONTROL C.MBLE	--	--	6	1	6962920	420-0019	BEARING/UNIT - BLAST WHEEL	--	--
55	1	6917470	--	SCREWCAP SOCM10 X 1.50" LONG	--	1.50"	31	2	P001433	--	KNOB/ALUMINUM HAND	--	--	7	1	6962750	420-0041	HUB/WHEEL	--	--
56	1	4514760	76B0200	CAGE /CONTROL 55" QV & CCW	--	--	32	1	6962930	420-0020	GUARD/BACKPLATE PULLEY	--	--	8*	1	6963170	420-0024	SEAL/SEPARATOR LID	5.20"	8.19"
57	1	P001688	--	KIT/SHIPPING-SAFETY	--	--	33	1	P000107	420-0003	GUARD/WHEEL UNIT DRIVE	--	--	9	1	4595560	77D0663	WHEEL/ 6-12" OPEN FACE	--	--
58*	4	P001684	--	SCREW/SHCS 5/16"-18 SS	--	0.75"	34	1	6962960	420-0021	HANDLE/STEERING	--	--	10	1	9763240	420-0030	BRACKET/CONTROL CAGE	--	--
59	1	696286	--	LEVER/ABRASIVE VALVE	--	--	35	1	6962970	420-0022	HANDLE/ABRASIVE CONTROL	--	--	11	1	4973070	95B0063	LINER/TOP -SLL	--	--
60	1	P002524	421-0010	PANEL/ELECTRICAL CONTROL 230V 60HZ	--	--	36*	1	6962880	420-0016	SCREEN/SEPARATOR	5.51"	6.89"	12	1	6908250	95B0016	LINER/L.H. SIDE -SLL	--	--
							37	2	9697630	420-0027	MAGNET/FRONT- REAR	--	--	13	1	6908260	95B0016	LINER/R.H. SIDE -SLL	--	--
							38	2	6908300	420-0029	BRUSH/FRONT-REAR	--	--	14	2	9700120	420-0056	CLAMP/CONTROL CAGE	0.88"	2.13"
							39	2	9697800	420-0028	MAGNET/SIDE	--	--	15	1	6849120	--	SEAL/FEED SPOUT	--	--
							40	2	6811550	90C0245	SKIRT/SIDE	--	--	16	2	03600001	--	CLAMP/TOGGLE MODEL #305U	--	--
							41	2	6811540	90C0244	RETAINER/SIDE	--	--	17	4	P001683	--	SCREWSOC. FLAT 5/16-18 S.S.	--	1.25"
							42	2	6807830	--	BELT/WHEEL DRIVE 3Vx25	--	--	18	1	6908170	94C0599	ADAPTER PLATE/WHEEL MOTOR 5060HZ	6.25	6.25
							43	2	6916120	--	NIPPLE/THROTTLE NUT	--	--	19	1	6962780	420-0014	FRAME/REAR	--	--
							44	1	6962870	--	SPRING/COIL 048 WIRE	--	2.25"	20*	1	6963030	--	BRACKET/FRONT CASTERMOUNTING	--	--
							45	2	6908350	--	SCREWSSET SQ. 5/16-18	--	1.50"	21	1	6962980	420-0025	AXLE/FRONT	--	--
							46*	2	5000590	--	NUT/HEX 5/16"-18UNC	--	--	22	1	6908370	--	BUSHING/TAPERLOCK 1108 X 20mm BORE	--	--
							47	2	P001685	--	PIN/COTTER 3/32"	--	1.00	23	2	6908270	--	WHEEL/100mm CASTER	--	--
							48	2	6908180	--	SCREWTHUMB 5/16-18	--	3.00"	24*	1	4979560	--	SEAL /FELT HUB	--	--



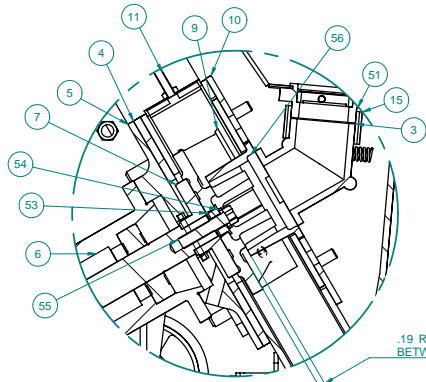
SECTION A-A
1:2



NOTE:

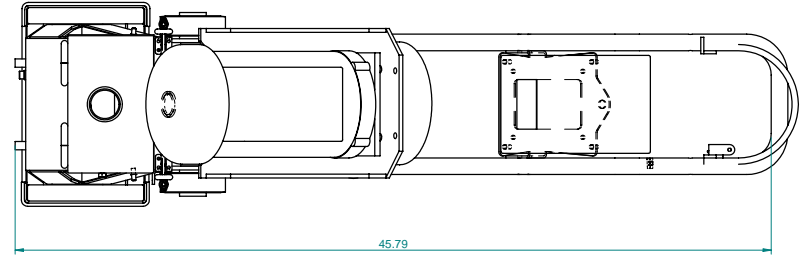
1. PART TO BE FREE OF SHARP EDGES, BURRS, SLAG AND WELD SPATTER.

A	BOM	ADDED ITEM #25; ITEM #60 REPLACES P001441;	2/11/04	PTR	
		REMOVED P/N 696291			
REV	ZONE	DESCRIPTION	DATE	BY	NCR#
REVISION					
THIS DRAWING AND THE DESIGN SHOWN THEREIN IS THE PROPERTY OF INTERNATIONAL SURFACE PREPARATION CORPORATION AND USE OR COPIES THEREOF CANNOT BE MADE WITHOUT WRITTEN CONSENT.					
APPROVAL		APPROVED BY: INITIAL		APPROVAL DATE: DATE	
NEXT ASSY	REV	QTY	PER MACHINE	FIXED	NO
--	--	--	--	--	1-8DEC
TOLERANCE MACHINING		BLASTRAC An International Surface Preparation Technology			
ANGLES ±.500"		MACHINE ASSEMBLY			
1 PL DEC ±.060		1-8DEC (230V 1PH 3HP 60HZ) SHOT BLAST UNIT			
2 PL DEC ±.010		SCALE NONE DRWN CJM			
3 PL DEC ±.005		DATE 02/01/00		SHT 1 OF 3	
420-0001				95	

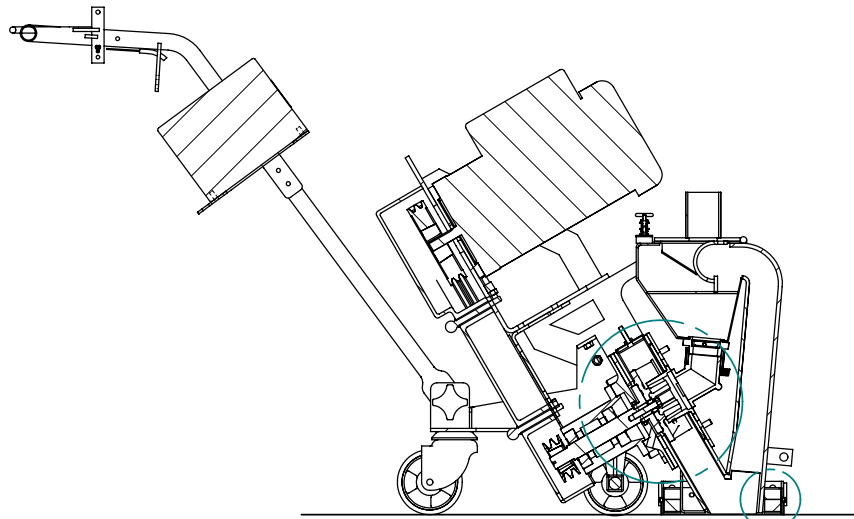


DETAIL D
1:2

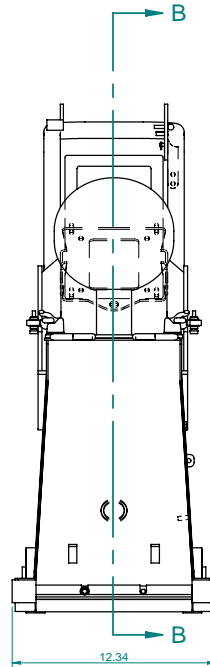
.19 RECOMMENDED CLEARANCE
BETWEEN CONTROL CAGE AND BLAST WHEEL



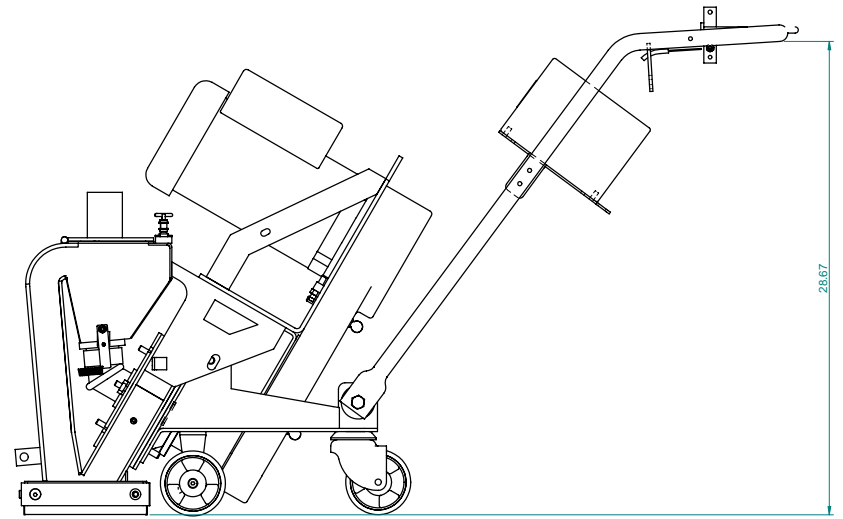
45.79



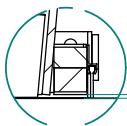
SECTION B-B



12.34



28.67



.12 RECOMMENDED HEIGHT OF
MAGNETS ABOVE WORK SURFACE.

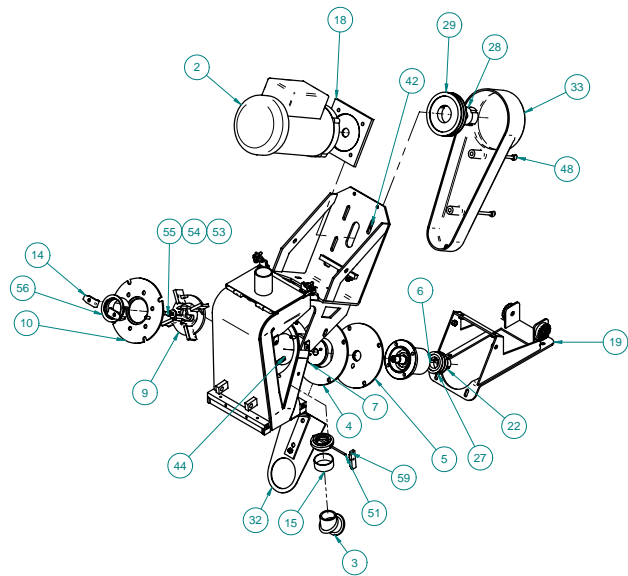
DETAIL C

NOTE:

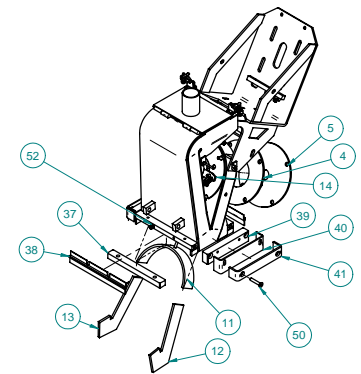
1. PART TO BE FREE OF SHARP EDGES, BURRS, SLAG AND WELD SPATTER.

REV	ZONE	DESCRIPTION	DATE	BY	NCR#
REVISION					
<small>THIS DRAWING AND THE DESIGN SHOWN THEREIN IS THE PROPERTY OF INTERNATIONAL SURFACE PREPARATION CORPORATION AND USE OR COPIES THEREOF CANNOT BE MADE WITHOUT WRITTEN CONSENT.</small>					
APPROVAL		APPROVED BY: INITIAL		APPROVAL DATE: DATE	
NEXT ASSY	REF DWG	PROPERTY PER MACHINE	TRK#	NO	1-8DEC
TOLERANCE MACHINING		BLASTAC <small>An International Surface Preparation Technology</small>			
ANGLES ±.500"		MACHINE ASSEMBLY			
1 PL DEC ±.060		1-8DEC (230V 1PH 3HP 60HZ) SHOT BLAST UNIT			
2 PL DEC ±.010		SCALE NONE DRWN CJM			
3 PL DEC ±.005		DATE 02/01/00 SHT 2 OF 3			
				420-0001	

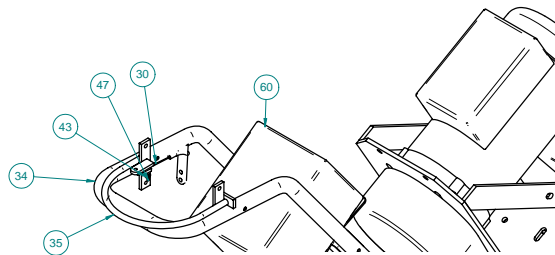
6215 ALUMA VALLEY DRIVE
OKLAHOMA CITY, OK 73121
U.S.A.



BLAST WHEEL AND MOTOR STACK-UP
1:8



LINERS, MAGNETS, AND SEALS
1:8



VIEW OF OPERATOR CONTROLS
1:4

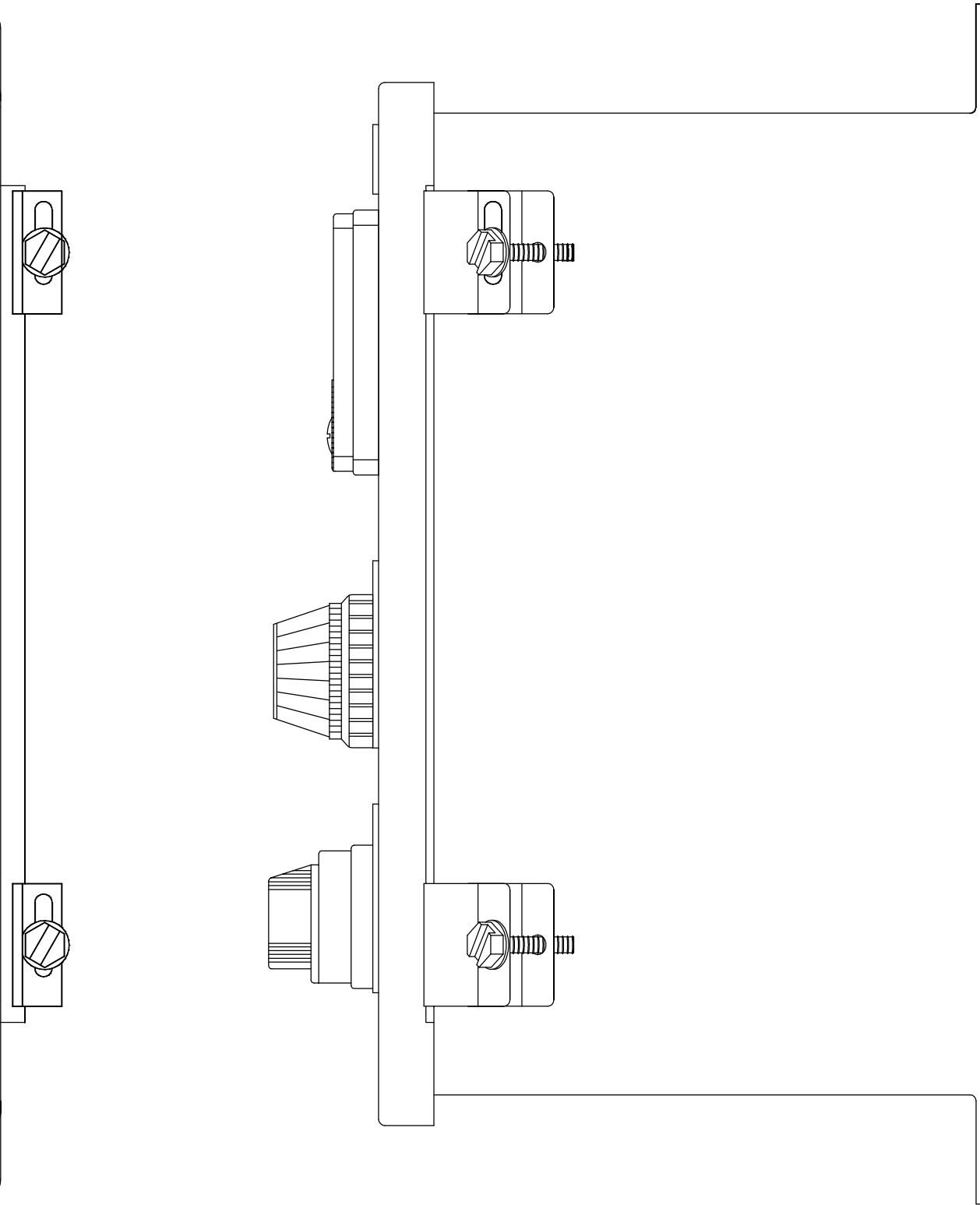
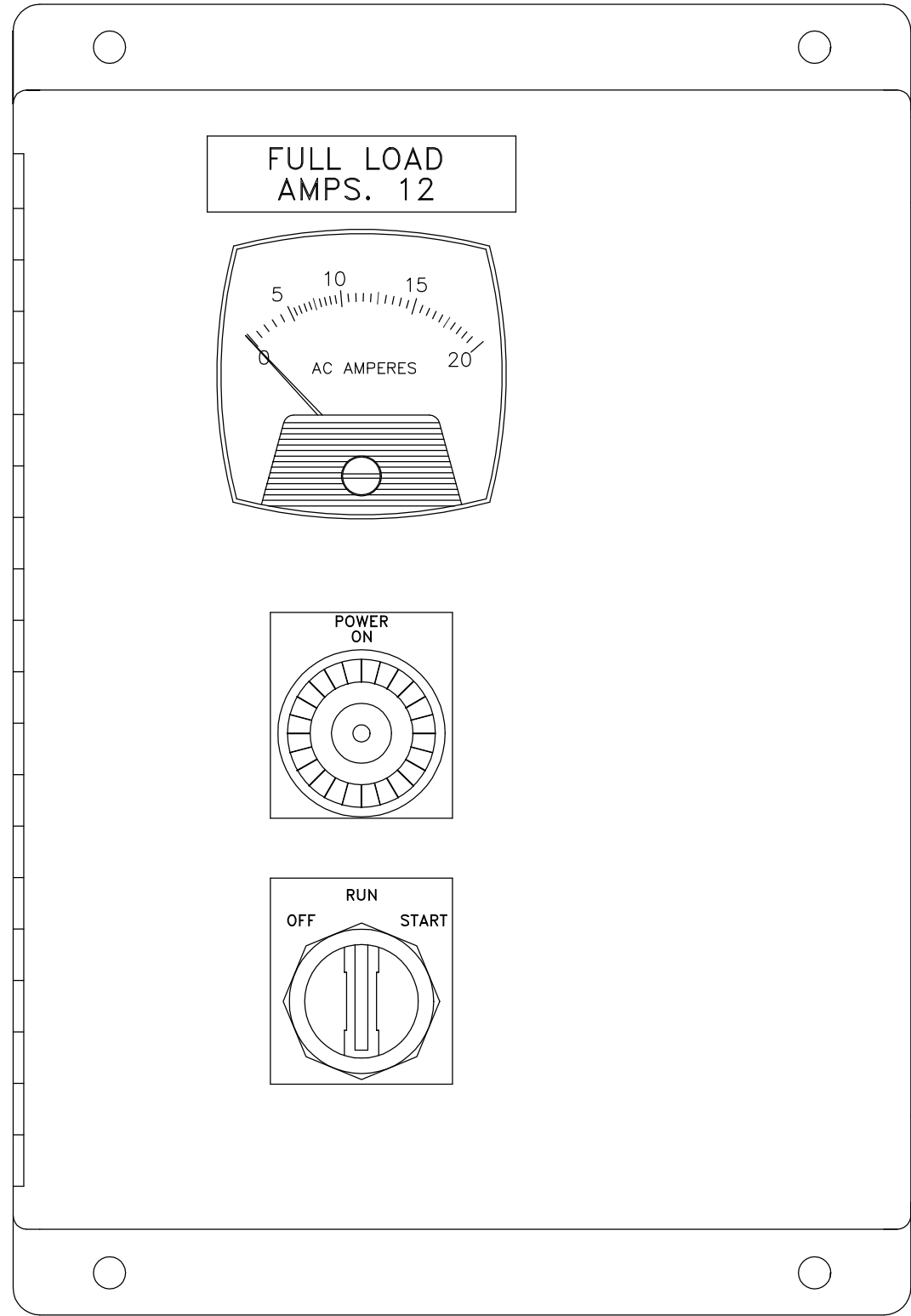
NOTE:

1. PART TO BE FREE OF SHARP EDGES, BURRS, SLAG AND WELD SPATTER.

REV	ZONE	DESCRIPTION	DATE	BY	NCR#
REVISION					
<small>THIS DRAWING AND THE DESIGN SHOWN THEREIN IS THE PROPERTY OF INTERNATIONAL SURFACE PREPARATION CORPORATION AND USE OR COPIES THEREOF CANNOT BE MADE WITHOUT WRITTEN CONSENT.</small>					
APPROVAL		APPROVED BY: INITIAL		APPROVAL DATE: DATE	
NEXT ASSY	REF DWG	QTY PER MACHINE	TRK#	1-8DEC	
TOLERANCE MACHINING		BLASTRAC <small>An International Surface Preparation Technology</small>			
ANGLES ±.500"		MACHINE ASSEMBLY			
1 PL DEC ±.060		1-8DEC (230V 1PH 3HP 60HZ) SHOT BLAST UNIT			
2 PL DEC ±.010		SCALE NONE		DRWN CJM	
3 PL DEC ±.005		DATE 02/01/00		SHT 3 OF 3	
				420-0001	

A B C D E F G H I J

1
2
3
4
5
6
7
8

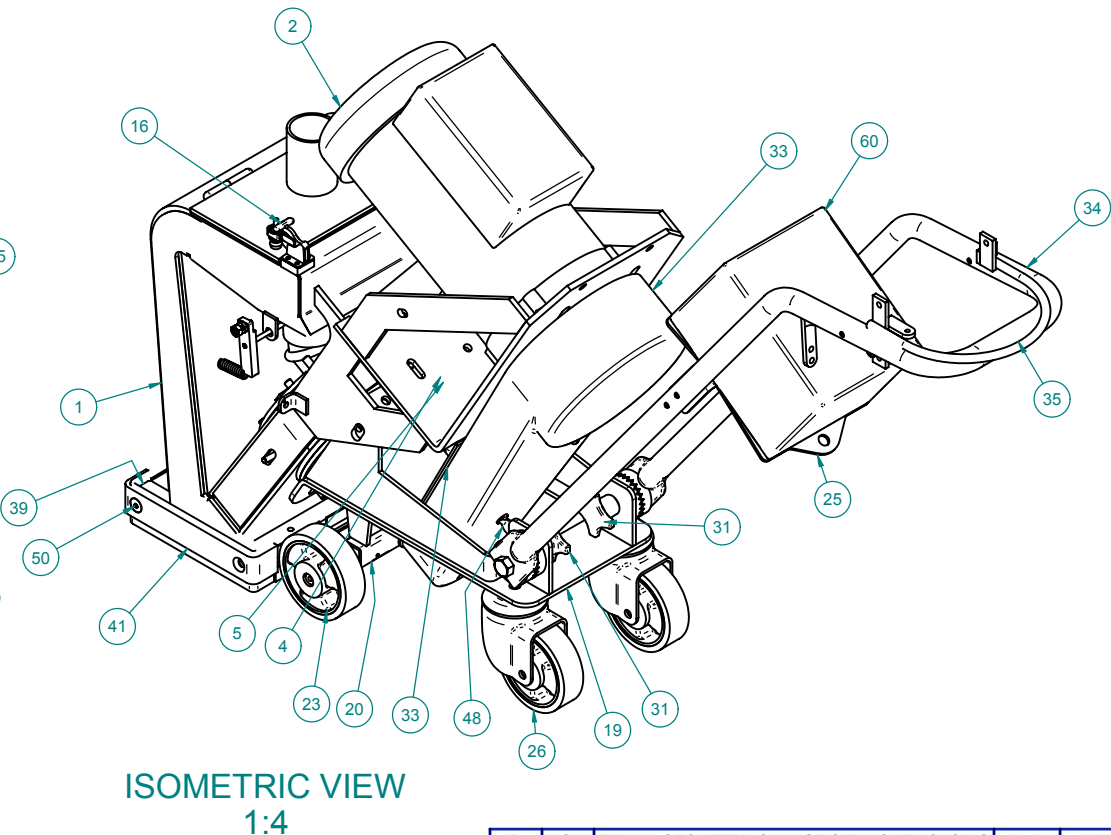
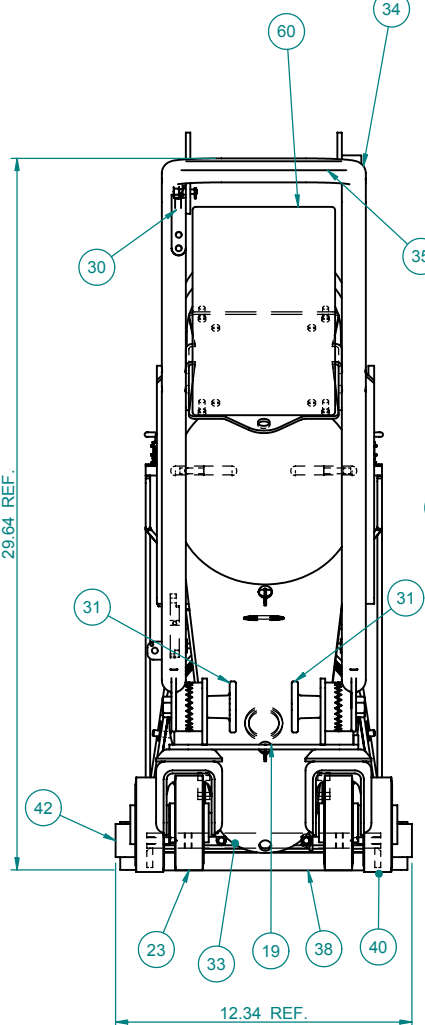
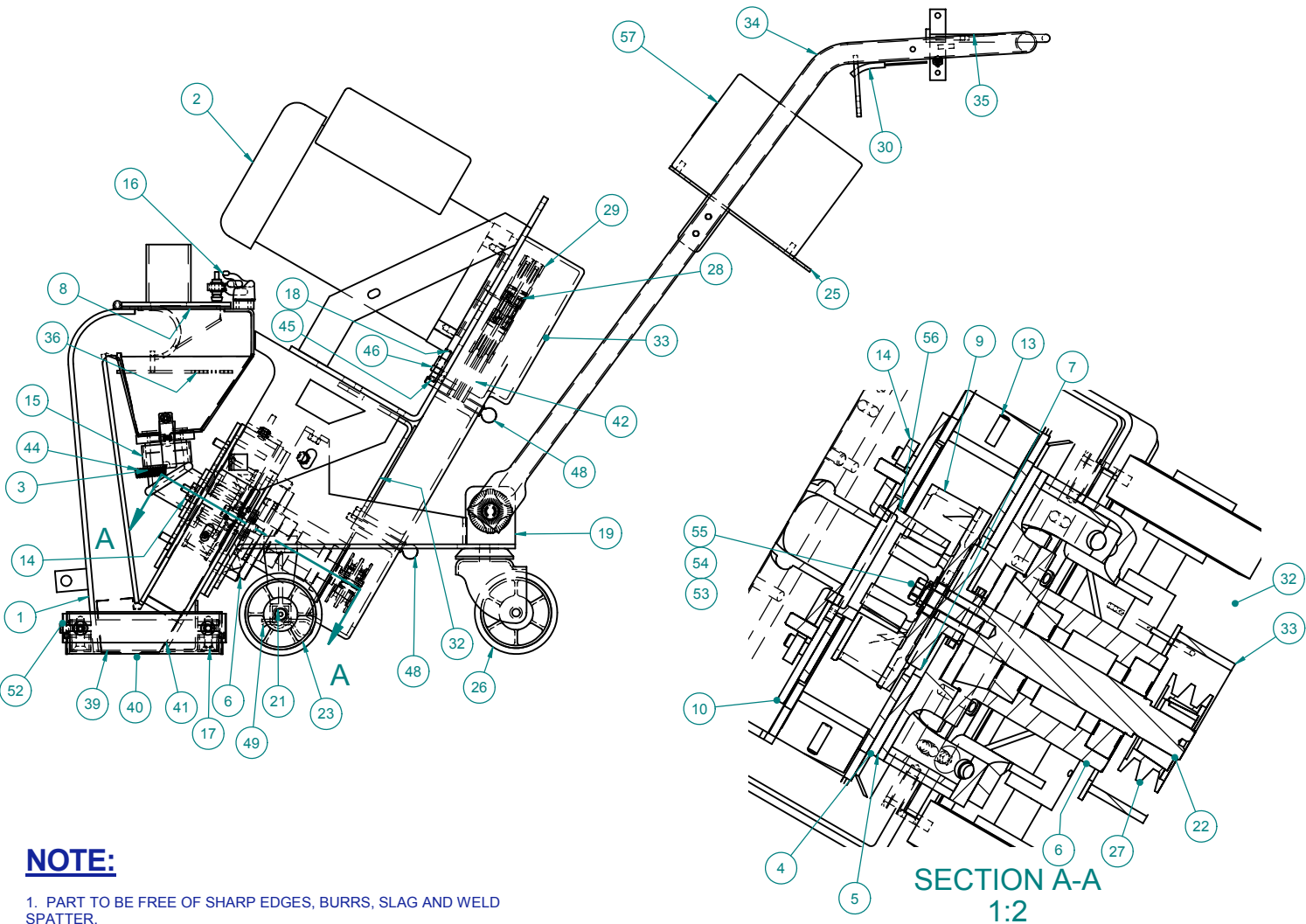
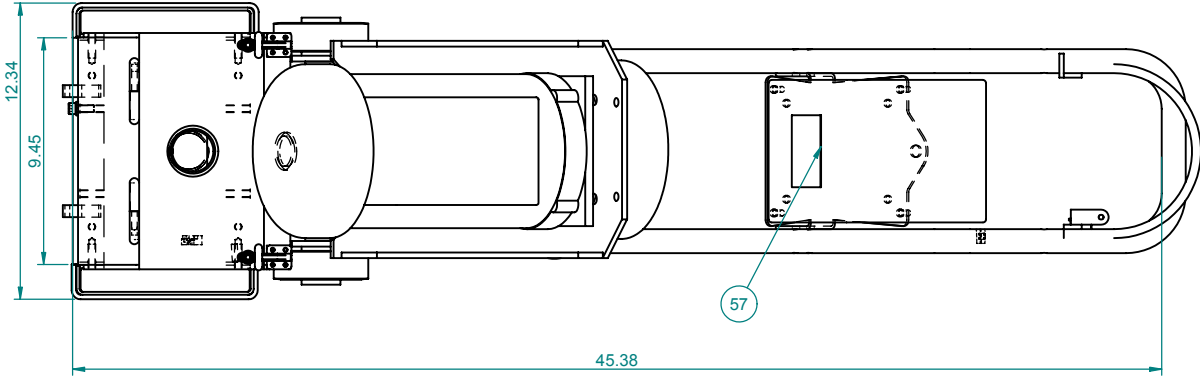


1
2
3
4
5
6
7
8

B	REDRAWN IN AUTOCAD	2/3/00	OS
	CONTROL PANEL LAYOUT DRAWN		
A	AMMETER PART NUMBER WAS 678390, CHANGED TO 463828	6/13/97	TAV
	MOTOR PART NUMBER WAS 690817, CHANGED TO 690816		
REV	DESCRIPTION	DATE	BY
REVISION			
THIS DRAWING AND THE DESIGN SHOWN THEREIN IS THE PROPERTY OF U.S. FILTER. WHEELABRATOR AND USE OR COPIES THEREOF CANNOT BE MADE WITHOUT WRITTEN CONSENT.			
FIRST USED	1/95	REF. DWG. 95C001	PART NO. 690822
TOLERANCE UNLESS SPECIFIED	 		
ANGLES	± 1°	1-8DEC 230/60HZ	
FRACTIONS	± 1/16	PANEL LAYOUT AND ENCLOSURE	
2 PL DEC	± .06	SCALE NTS	DRWN TAV
3 PL DEC	± .005	DATE 1/4/95	SHT 2 OF 2
			 95C001

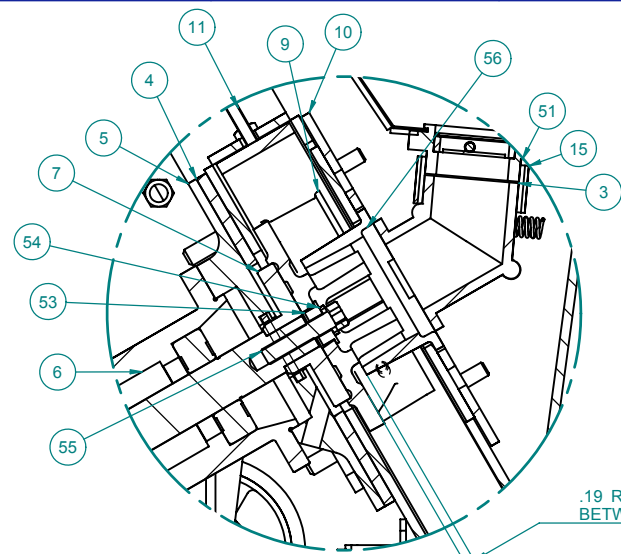
A B C D E F G H I J

ITEM	QUANTITY	CATALOG NUMBER	DRAWING NUMBER	DESCRIPTION	WIDTH	LENGTH	ITEM	QUANTITY	CATALOG NUMBER	DRAWING NUMBER	DESCRIPTION	WIDTH	LENGTH	ITEM	QUANTITY	CATALOG NUMBER	DRAWING NUMBER	DESCRIPTION	WIDTH	LENGTH
49	1	6960020	--	PIN/HAIR STYLE (CLEVIS) FOR 3/8"-3/4" DIA. SHAFT X .093" WIRE DIA.	--	2.50"	25	1	P002647	421-0011	MOUNTING PLATE/ELECTRICAL BOX	8.32"	11.26"	1*	1	6962810	420-0011	BLAST HOUSING SLL	--	--
50	4	P001682	--	SCREW/SOC. FLAT 5/16-18 S.S.	--	1.75"	26	2	6962940	--	CASTERS/WIVEL 4" X 1-1/4"	--	--	2	1	6908160	--	MOTOR/ELEC. 3HP 230V 60HZ 1PH	--	--
51	1	P000001	420-0015	VALVE/ABRASVE CONTROL	--	--	27	1	690820	--	SHEAVE/TAPERLOCK 2/3V2.65-1108 DODGE #112128	--	--	3	1	9675770	--	FEED SPOUT	--	--
52	4	5001140	--	WASHER/LOCK 5/16"	--	--	28	1	690838	--	BUSHING/TAPER LOCK	--	--	4	1	P001125	420-0012	SEAL/BEARING UNIT	--	--
53	1	4900890	82A0608	INSERT/WHEEL ADAPTER	--	--	29	1	6908190	--	SHEAVE/TAPERLOCK 2/3V5.3-1610 DODGE #112194	--	--	5	1	6962770	420-0013	MOUNTING-PLATE/BEARING	--	--
54	1	6815560	--	WASHER/LOCK M10.0	--	--	30	1	6933320	--	ABRASME VALVE CONTROL CABLE	--	--	6	1	6962920	420-0019	BEARING/UNIT - BLAST WHEEL	--	--
55	1	6917470	--	SCREW/CAP SOC M10 X 1.50" LONG	--	1.50"	31	2	P001433	--	KNOB/ALUMINUM HAND	--	--	7	1	6962750	420-0041	HUB/WHEEL	--	--
56	1	4514760	76B0200	CAGE / CONTROL 55° CW & CCW	--	--	32	1	6962930	420-0020	GUARD/BACKPLATE PULLEY	--	--	8*	1	6963170	420-0024	SEAL/SEPARATOR/LID	5.20"	8.19"
57	1	P001688	--	KIT/SHIPPING-SAFETY	--	--	33	1	P000107	420-0003	GUARD/WHEEL UNIT DRIVE	--	--	9	1	4595560	77D0663	WHEEL/ 6-1/2" OPEN FACE	--	--
58*	4	P001684	--	SCREW/SHCS 5/16"-18 SS	--	0.75"	34	1	6962960	420-0021	HANDLE/STEERING	--	--	10	1	9763240	420-0030	BRACKET/CONTROL CAGE	--	--
59	1	696286	--	LEVER/ABRASVE VALVE	--	--	35	1	6962970	420-0022	HANDLE/ABRASVE CONTROL	--	--	11	1	4973070	95B0063	LINER/TOP - SLL	--	--
60	1	P002524	421-0010	PANEL/ELECTRICAL CONTROL 230V 60HZ	--	--	36*	1	6962880	420-0016	SCREEN/SEPARATOR	5.51"	6.89"	12	1	6908250	95B0016	LINER/L.H. SIDE - SLL	--	--
							37	2	9697630	420-0027	MAGNET/ FRONT- REAR	--	--	13	1	6908260	95B0016	LINER/R.H. SIDE - SLL	--	--
							38	2	6908300	420-0029	BRUSH/FRONT-REAR	--	--	14	2	9700120	420-0056	CLAMP/CONTROL CAGE	0.88"	2.13"
							39	2	9697800	420-0028	MAGNET/SIDE	--	--	15	1	6849120	--	SEAL/FEED SPOUT	--	--
							40	2	6811550	90C0245	SKIRT/SIDE	--	--	16	2	03600001	--	CLAMP/TOGGLE MODEL #305U	--	--
							41	2	6811540	90C0244	RETAINER/SIDE	--	--	17	4	P001683	--	SCREW/SOC. FLAT 5/16-18 S.S.	--	1.25"
							42	2	6807830	--	BELT/WHEEL DRIVE 3Vx425	--	--	18	1	6908170	94C0599	ADAPTER/PLATE/WHEEL MOTOR 50/60HZ	6.25	6.25
							43	2	6916120	--	NIPPLE/THROTTLE & NUT	--	--	19	1	6962780	420-0014	FRAME/REAR	--	--
							44	1	6962870	--	SPRING/COIL .048 WIRE	--	2.25"	20*	1	6963030	--	BRACKET/FRONT CASTER MOUNTING	--	--
							45	2	6908350	--	SCREW/SET SQ. 5/16-18	--	1.50"	21	1	6962980	420-0025	AXLE/FRONT	--	--
							46*	2	5000590	--	NUT/HEX 5/16"-18UNC	--	--	22	1	6908370	--	BUSHING/TAPERLOCK 1108 X 20mm BORE	--	--
							47	2	P001685	--	PIN/COTTER 3/32"	--	1.00	23	2	6908270	--	WHEEL/100mm CASTER	--	--
							48	2	6908180	--	SCREW/THUMB 5/16-18	--	3.00"	24*	1	4979560	--	SEAL / FELT HUB	--	--



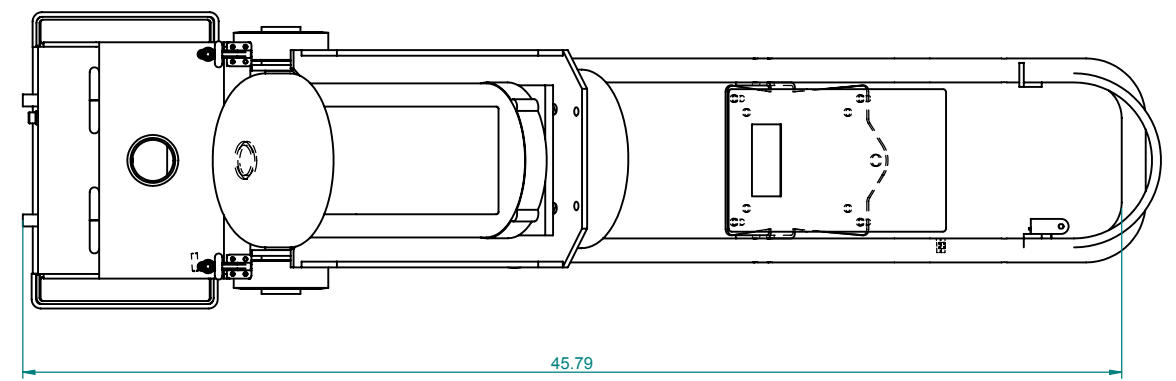
NOTE:
1. PART TO BE FREE OF SHARP EDGES, BURRS, SLAG AND WELD SPATTER.

B	BOM	ITEM #1 GEOMETRY CHANGE (STRAIGHT HOUSING)	9/25/08	JLD	0809-001
A	BOM	ADDED ITEM #25; ITEM #60 REPLACES P001441;	2/11/04	PTR	
		REMOVED P/N 696291			
REV	ZONE	DESCRIPTION	DATE	BY	NCR#
REVISION					
THIS DRAWING AND THE DESIGN SHOWN THEREIN IS THE PROPERTY OF INTERNATIONAL SURFACE PREPARATION CORPORATION AND USE OR COPIES THEREOF CANNOT BE MADE WITHOUT WRITTEN CONSENT.					
APPROVAL		APPROVED BY: INITIAL		APPROVAL DATE: DATE	
NEXT ASSY	REF DWG	TYP QTY PER MACHINE	PART NO.	1-8DEC	
TOLERANCE MACHINING		BLASTRAC		6215 ALUMA VALLEY DRIVE OKLAHOMA CITY, OK 73121 U.S.A.	
MACHINE ASSEMBLY					
1-8DEC (230V 1PH 3HP 60HZ) SHOT BLAST UNIT					
SCALE	NONE	DRWN	CJM	420-001	
DATE	02/01/00	SHT	1 OF 3		
				REV	B

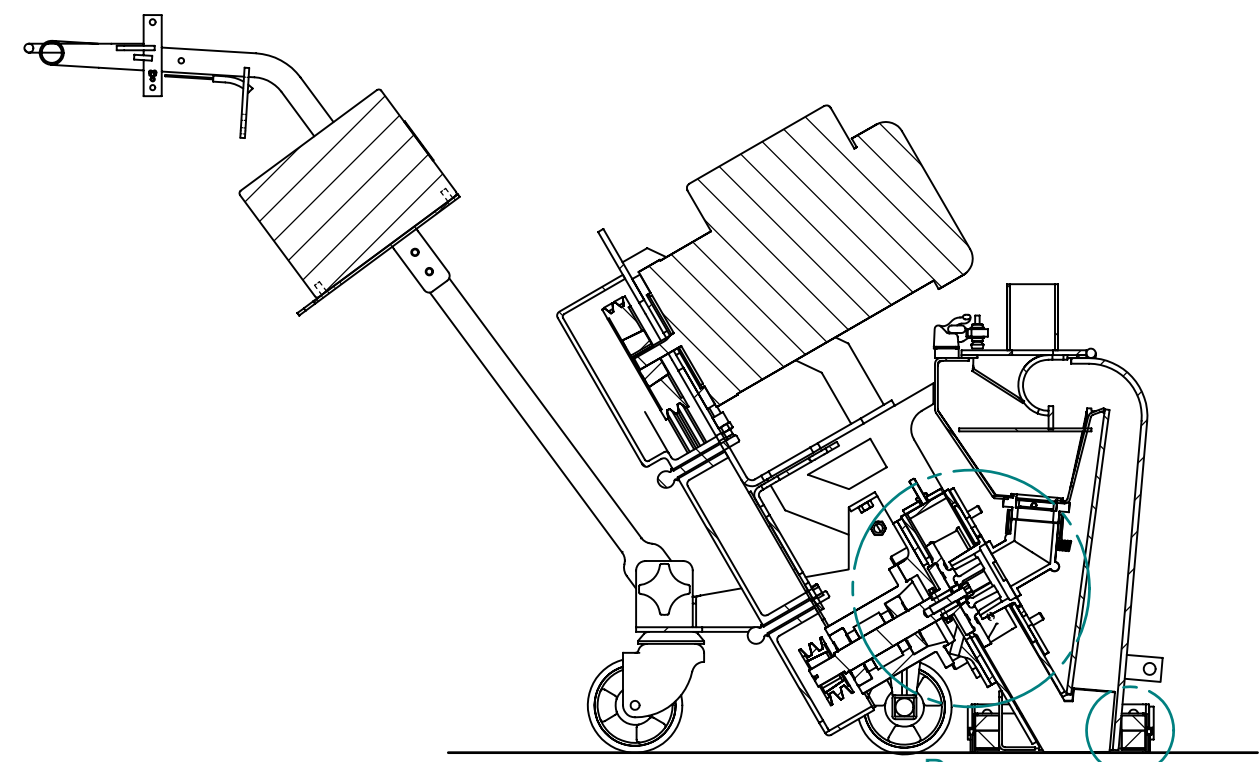


.19 RECOMENDED CLEARANCE
BETWEEN CONTROL CAGE AND BLAST WHEEL

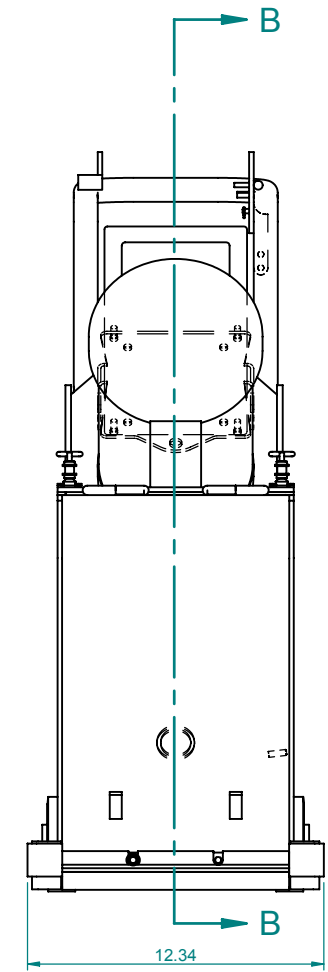
DETAIL D
1:2



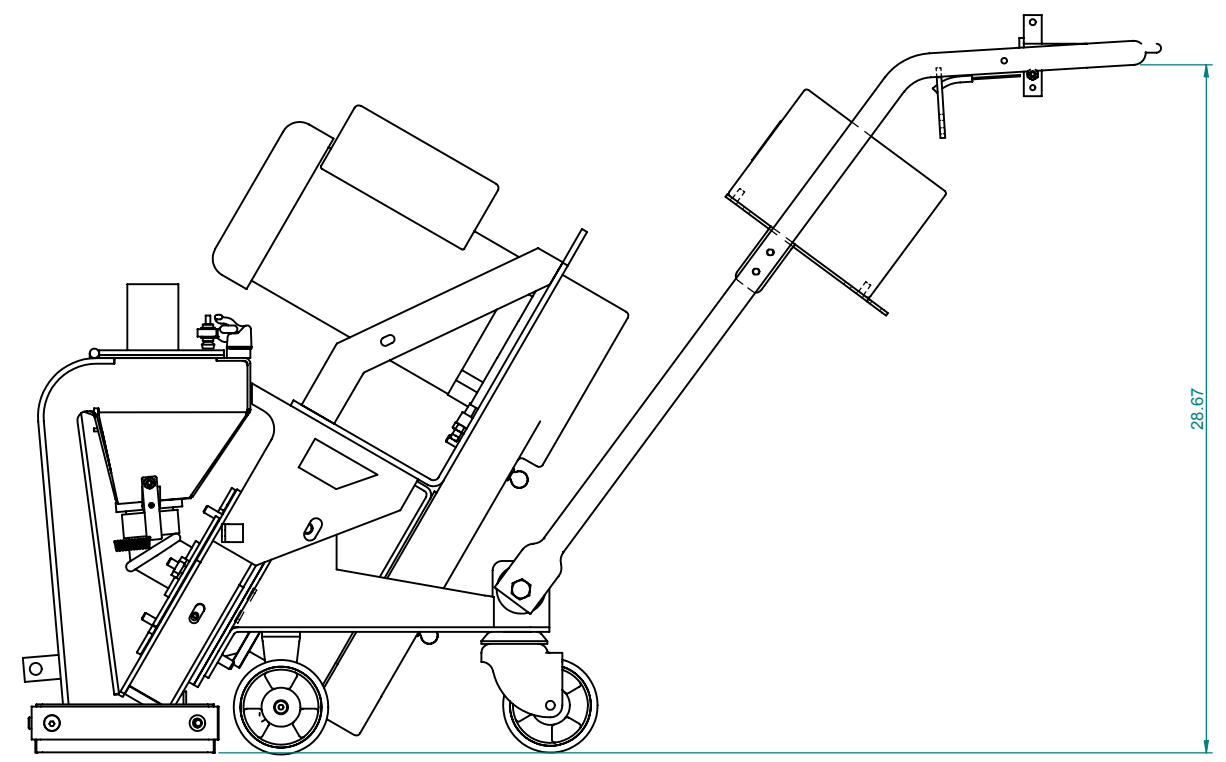
45.79



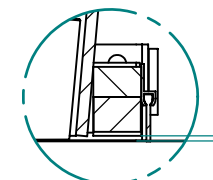
SECTION B-B



12.34



28.67



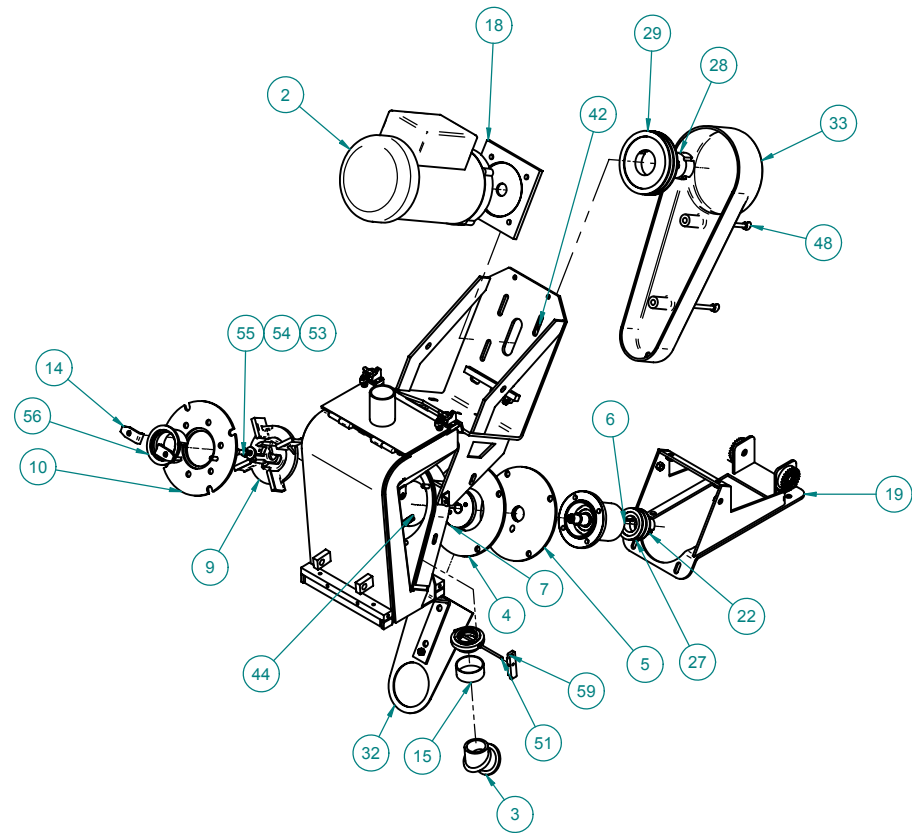
.12 RECOMENDED HEIGHT OF
MAGNETS ABOVE WORK SURFACE.

DETAIL C

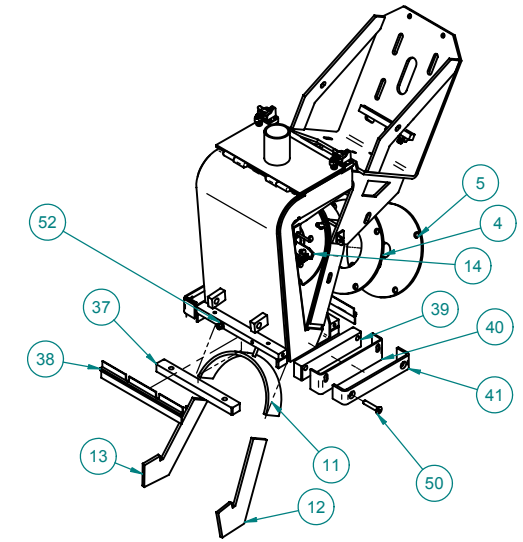
NOTE:

1. PART TO BE FREE OF SHARP EDGES, BURRS, SLAG AND WELD SPATTER.

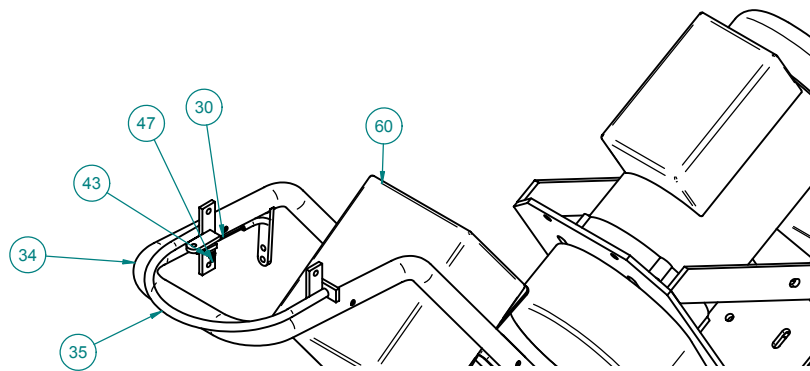
REV	ZONE	DESCRIPTION	DATE	BY	NCR#
REVISION					
<small>THIS DRAWING AND THE DESIGN SHOWN THEREIN IS THE PROPERTY OF INTERNATIONAL SURFACE PREPARATION CORPORATION AND USE OR COPIES THEREOF CANNOT BE MADE WITHOUT WRITTEN CONSENT.</small>					
APPROVAL		APPROVED BY: INITIAL		APPROVAL DATE: DATE	
NEXT ASSY	REF DWG	TYP QTY PER MACHINE	PART NO	1-8DEC	
TOLERANCE MACHINING		BLASTRAC <small>An International Surface Preparation Technology</small>		6215 ALUMA VALLEY DRIVE OKLAHOMA CITY, OK 73121 U.S.A.	
MACHINE ASSEMBLY					
1-8DEC (230V 1PH 3HP 60HZ) SHOT BLAST UNIT					
ANGLES ± .500°		SCALE NONE		DRWN CJM	
1 PL DEC ± .060		DATE 02/01/00		SHT 2 OF 3	
2 PL DEC ± .010		GEN		420-001	
3 PL DEC ± .005		REV B			



BLAST WHEEL AND MOTOR STACK-UP
1:8



LINERS, MAGNETS, AND SEALS
1:8



VIEW OF OPERATOR CONTROLS
1:4

NOTE:

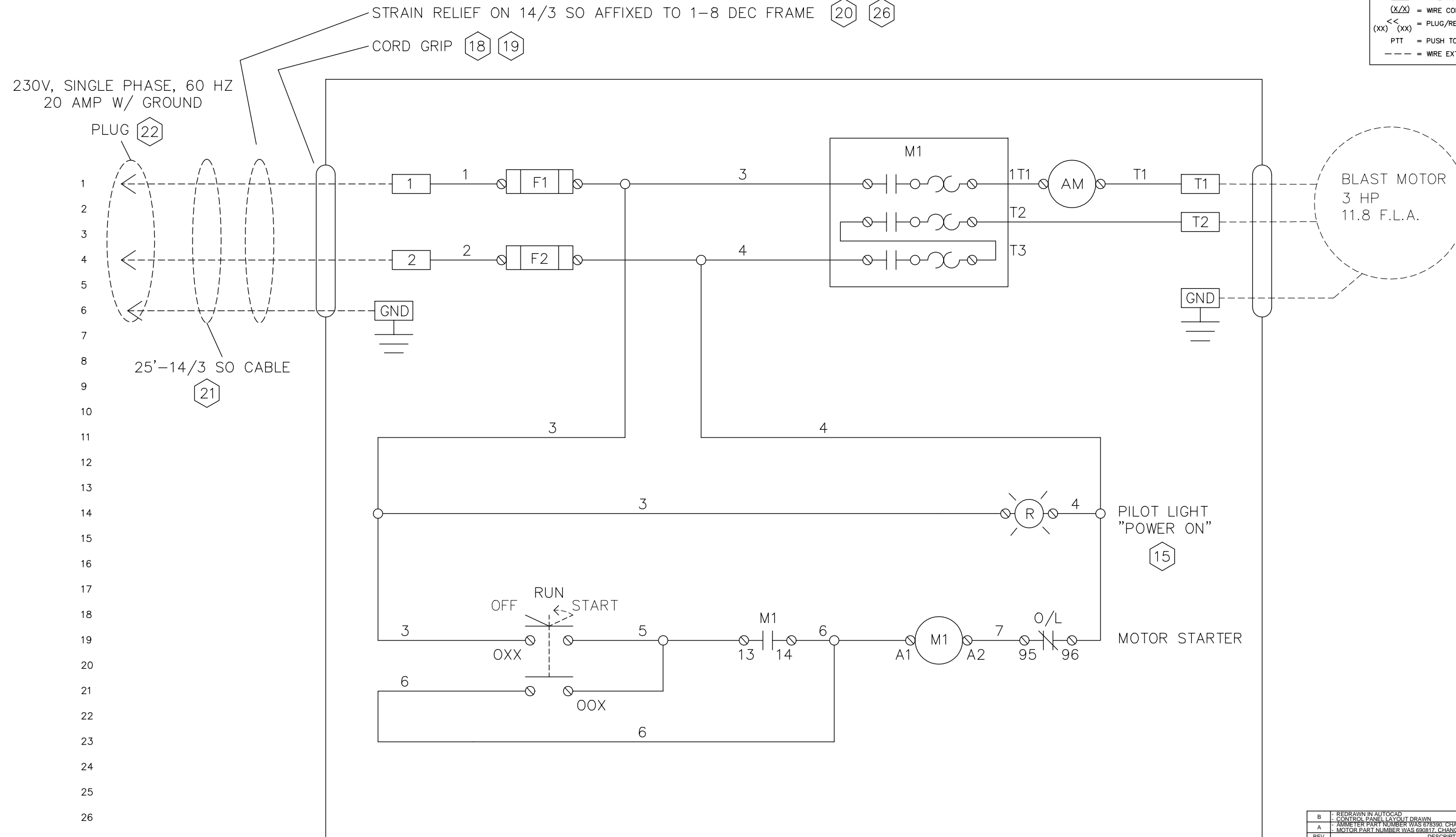
1. PART TO BE FREE OF SHARP EDGES, BURRS, SLAG AND WELD SPATTER.

REV	ZONE	DESCRIPTION	DATE	BY	NCR#
REVISION					
<small>THIS DRAWING AND THE DESIGN SHOWN THEREIN IS THE PROPERTY OF INTERNATIONAL SURFACE PREPARATION CORPORATION AND USE OR COPIES THEREOF CANNOT BE MADE WITHOUT WRITTEN CONSENT.</small>					
APPROVAL		APPROVED BY: INITIAL		APPROVAL DATE: DATE	
NEXT ASSY	REF DWG	TYP QTY PER MACHINE	PART NO	1-8DEC	
TOLERANCE MACHINING		BLASTRAC <small>An International Surface Preparation Technology</small>		6215 ALUMA VALLEY DRIVE OKLAHOMA CITY, OK 73121 U.S.A.	
ANGLES ± .500°		MACHINE ASSEMBLY			
1 PL DEC ± .060		1-8DEC (230V 1PH 3HP 60HZ) SHOT BLAST UNIT			
2 PL DEC ± .010		SCALE NONE	DRWN CJM	420-0001	
3 PL DEC ± .005		DATE 02/01/00	SHT 3 OF 3	REV B	

1-8 DEC CONTROL PANEL FOR 230V/60HZ

TOTAL FLA	LARGEST MOTOR FLA @ SUPPLY VOLTAGE
11.8 AMPS	11.8 AMPS 230V
PHASE - 1	ENCLOSURE - TYPE 1
HERTZ - 60	MODEL - 1-8DEC 230V

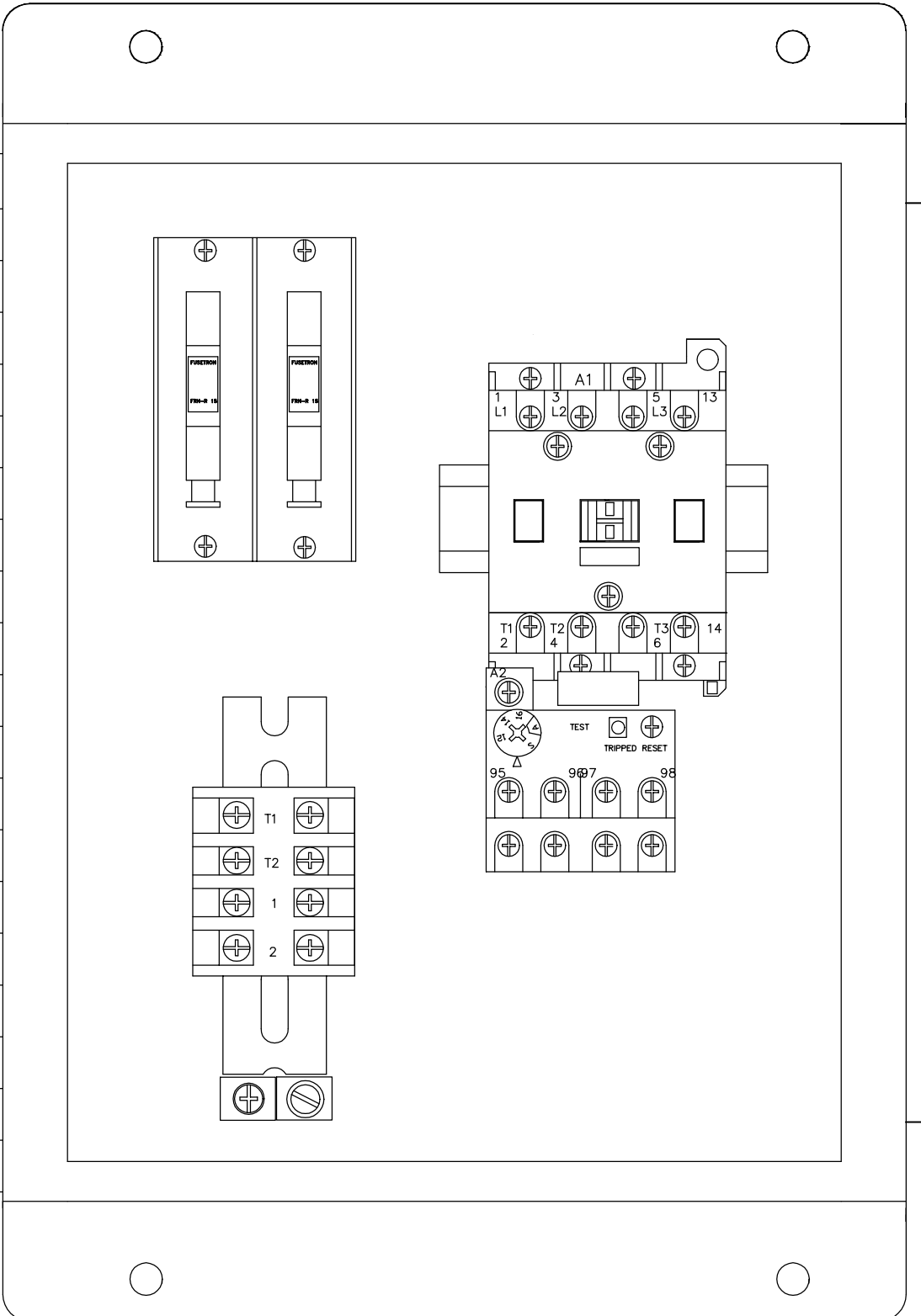
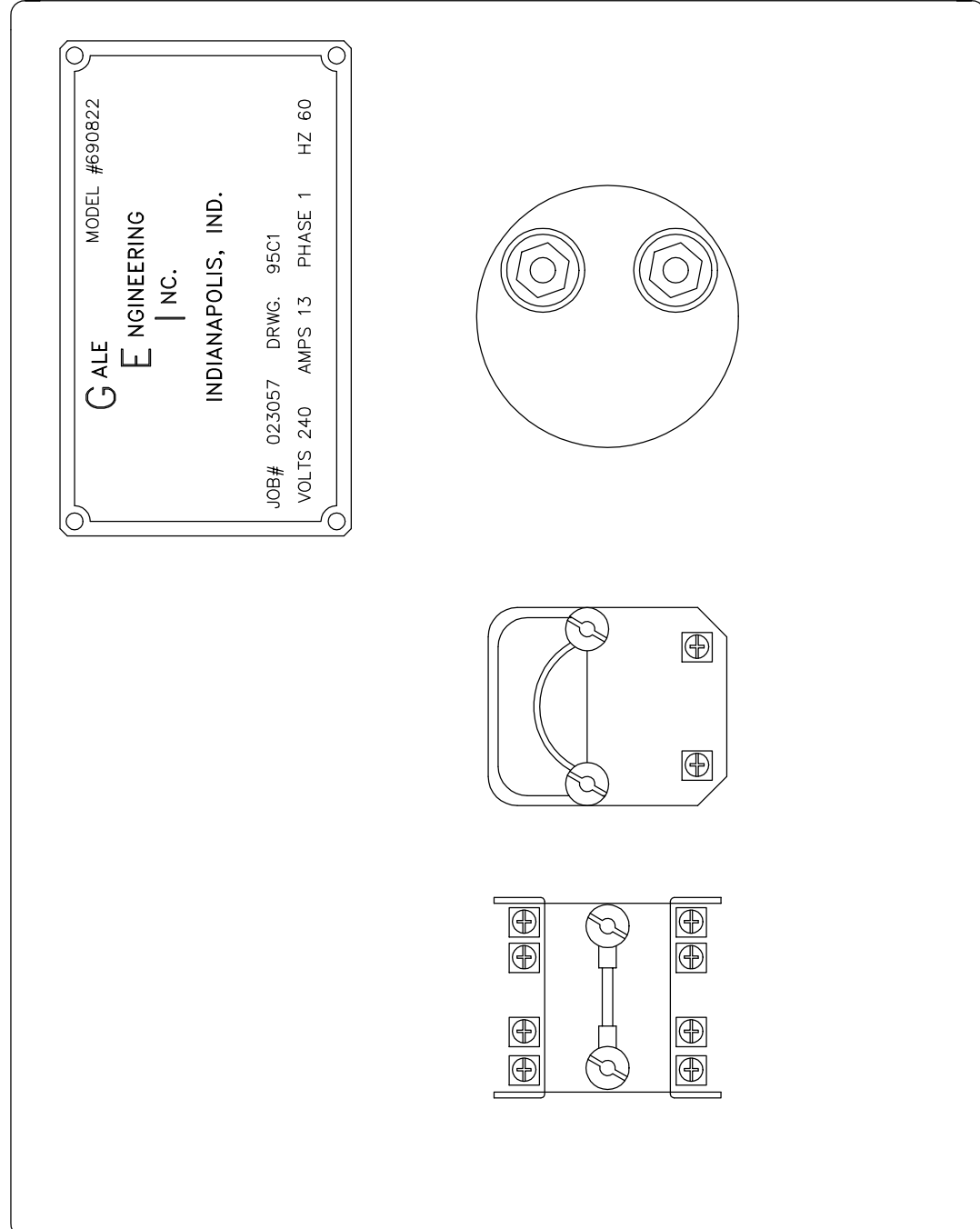
SCHEMATIC SYMBOLS	
XX	= TERMINAL BLOCK
⊗	= VOLTAGE SELECTOR SWITCH TERMINAL
○	= ELECTRICAL JUNCTION
⊗XX	= COMPONENT TERMINAL AND NUMBER
XX	= WIRE NUMBER
(X/X)	= WIRE COLOR AND AWG
(XX) << (XX)	= PLUG/RECP TERMINAL NUMBER
PTT	= PUSH TO TEST PILOT LIGHT
---	= WIRE EXTERNAL TO ENCLOSURE



B	REDRAWN IN AUTOCAD	2/3/00	OS
A	CONTROL PANEL LAYOUT DRAWN	6/13/97	TAV
REV	DESCRIPTION	DATE	BY
1/95	REF: 95C001	PART NO: 690822	
REVISION			
THIS DRAWING AND THE DESIGN SHOWN THEREIN IS THE PROPERTY OF U.S. FILTER WHEELABRATOR AND USE OR COPIES THEREOF CANNOT BE MADE WITHOUT WRITTEN CONSENT.			
1-8DEC 230V/60HZ CONTROL PANEL SCHEMATIC			
TOLERANCE UNLESS SPECIFIED	SCALE NTS	DRWN TAV	DATE 1/4/95
ANGLES ± 1'	FRACTIONS ± 1/16	3 PL DEC ± .005	SHT 1 OF 2
			95C001

A B C D E F G H I J

1
2
3
4
5
6
7
8



1
2
3
4
5
6
7
8

B	REDRAWN IN AUTOCAD	2/3/00	OS
A	CONTROL PANEL LAYOUT DRAWN	6/13/97	TAV
REV	DESCRIPTION	DATE	BY
REVISION			
THIS DRAWING AND THE DESIGN SHOWN THEREIN IS THE PROPERTY OF U.S. FILTER. WHEELABRATOR AND USE OR COPIES THEREOF CANNOT BE MADE WITHOUT WRITTEN CONSENT.			
FIRST USED	1/95	REF. DRWG. 95C001	PART NO. 690822
TOLERANCE UNLESS SPECIFIED		6215 ALUMA VALLEY DRIVE OKLAHOMA CITY, OK 73121 U.S.A.	
ANGLES	± 1°	1-8DEC 230/60HZ	
FRACTIONS	± 1/16	PANEL LAYOUT AND ENCLOSURE	
2 PL DEC	± .06	SCALE NTS	DRWN TAV
3 PL DEC	± .005	DATE 1/4/95	SHT 2 OF 2
			95C001

A B C D E F G H I J